



Process Flow, HVC/Electrical

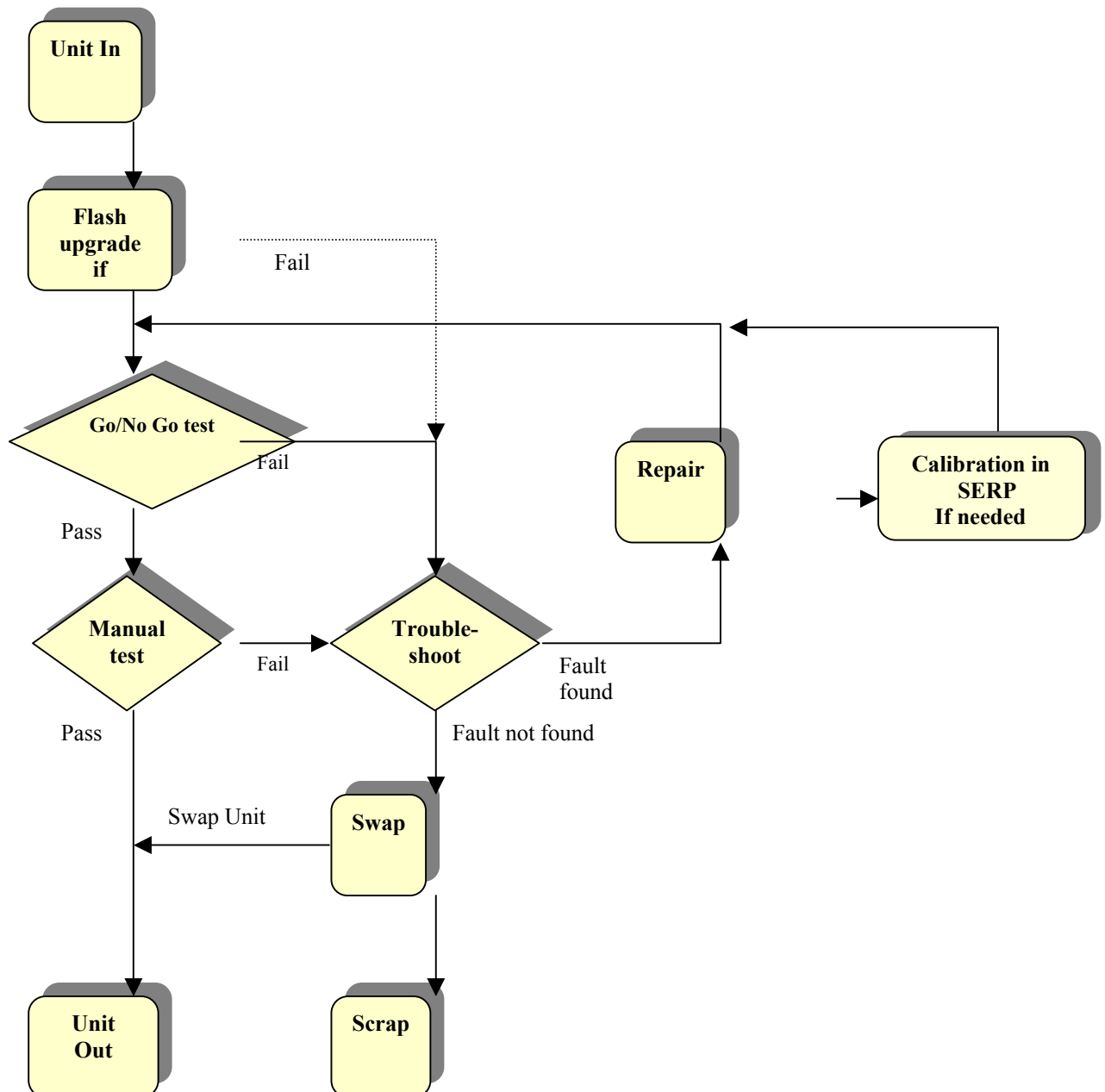
Applicable for Z600/Z608

Contents

1	Process Flow	2
1.1	Process Flow Description	3
2	Revision History	3



1 Process Flow





1.1 Process Flow Description

Box	Reference
Flash upgrade (if needed)	<i>Test Instructions, Electrical Repair</i> If necessary, update the phone with the latest software revision. Continue with Go/NoGo .
Go/No Go test	<i>Test Instructions, Electrical Repair</i> Verify the radio parameters of the phone by using a test instrument. If the phone fails, continue with Trouble shoot , or if it passes continue with Manual test .
Manual test	<i>Test Instructions, Electrical Repair</i> To verify the phone, all test actions must be performed. If the phone fails continue with Trouble shoot , or if it passes send it back to the customer.
Trouble shoot	<i>Trouble Shooting Guide, Mechanical and Electrical Repair</i> Trouble-shoot the phone according to the guide for the most common faults. If a fault is found continue with Repair , otherwise Scrap the phone.
Repair	<i>Working Instructions, Mechanical and Electrical Repair</i> Repair the faulty phone according to the instruction. Continue with Manual test .
Calibration in SERP (if needed)	<i>Test Instructions, Electrical Repair</i> If a repair that requires calibration has been made, calibrate the unit and continue with Go/No Go test . <i>Calibration can only be done by authorized repair centers.</i>
Swap	Swap the faulty phone according to <i>Working Instruction, Swap</i> .

2 Revision History

Rev.	Date	Changes / Comments
A	2003-09-17	First release
B	2003-10-01	Minor changes